

## INSTRUCTIONS FOR USE

**PRIOR TO USE**, visually inspect the product for:

- ⊘ Broken tamper-evident seals
- ⊘ Cracked glass
- ⊘ Leaking drug
- ⊘ Expired date
- ⊘ Particulate matter

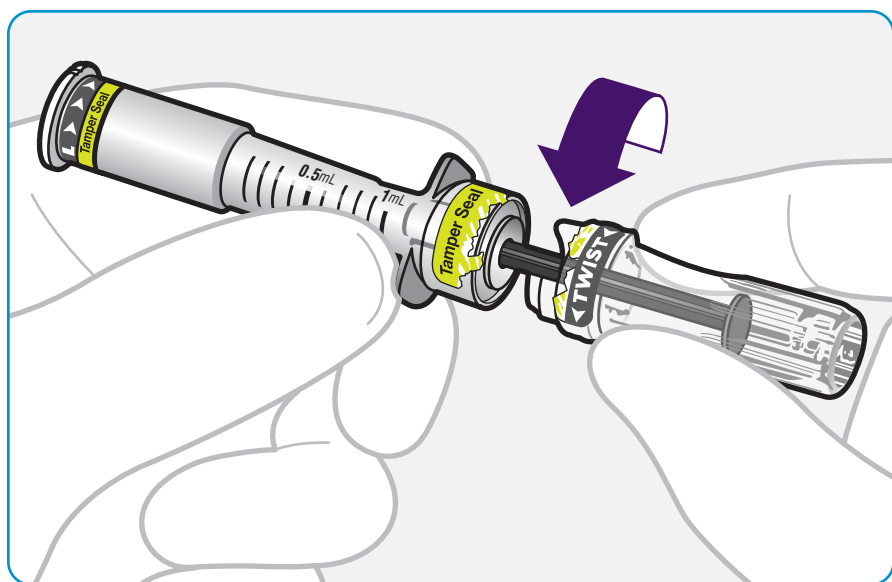
If any of the above is present, **DO NOT USE** the product and obtain a new one.

**CONFIRM** medication order matches the following:

- ✓ Drug name
- ✓ Dose
- ✓ Drug strength
- ✓ Route of administration

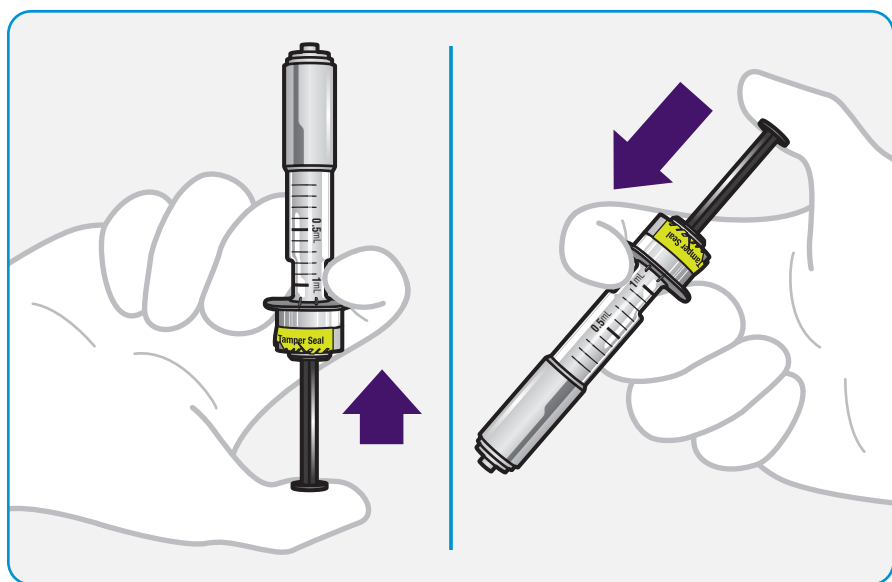
If any of the above does not match the order, **obtain the appropriate medication.**

### STEP 1



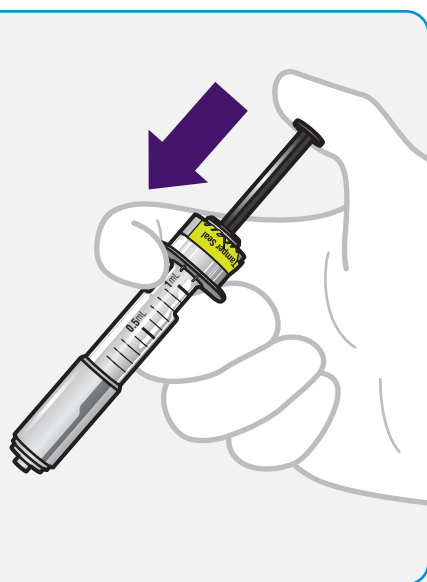
1. Twist off the plunger rod cover to break the tamper-evident seal and discard the cover.

### STEP 3

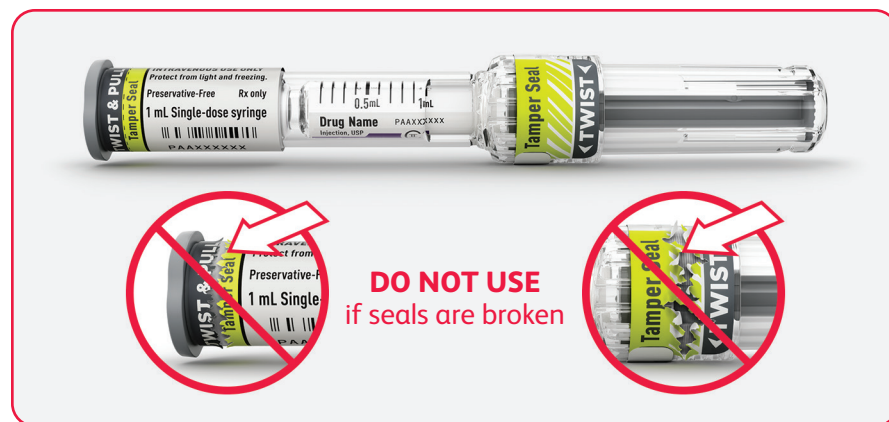


3. Expel air by gently advancing the plunger rod.

### STEP 4



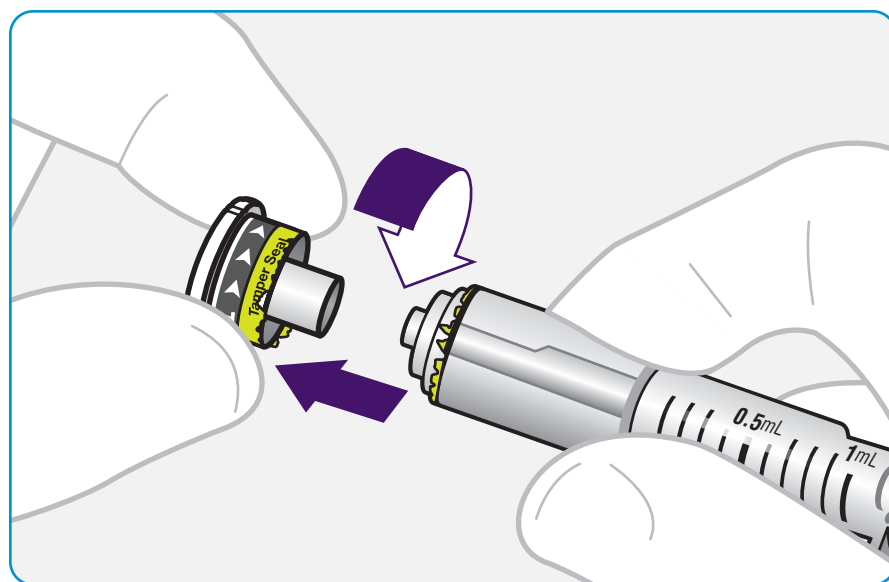
4. Adjust dose by expelling extra volume from the syringe (when clinically relevant), based on your facility protocol.



### NOTES:

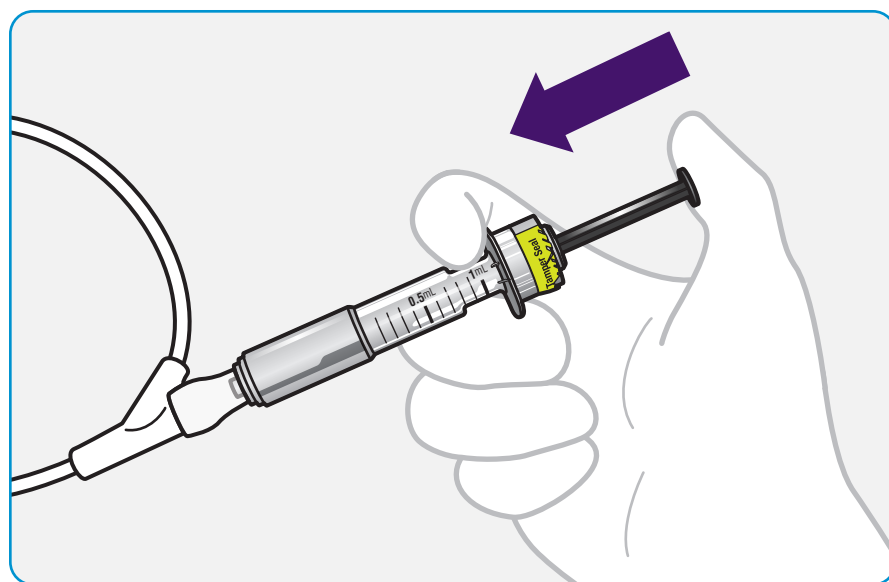
- ⊘ Do not place the syringe in a sterile field
- ⊘ To prevent needlestick injuries, needles and blunt cannulas should not be recapped, purposely bent, or broken by hand

### STEP 2



2. Twist the luer tip cover to break the tamper-evident seal. Pull the luer tip cover off the syringe and discard it.

### STEP 5



5. After appropriately preparing the administration site, connect the luer to an access device or attach a needle/blunt cannula if needed. Ensure the connection is secure and deliver the medication.\*

\*After use, discard the product into an appropriate receptacle.

For more information, please contact your Pfizer Sales Representative. You may also call Pfizer Customer Service at **1-844-646-4398** or visit **PfizerHospitalUS.com**.

Please see Full Prescribing Information, including **BOXED WARNING** if applicable, and Instructions for Use, for all products within this delivery system by visiting **www.PfizerHospitalUS.com/nexject**.